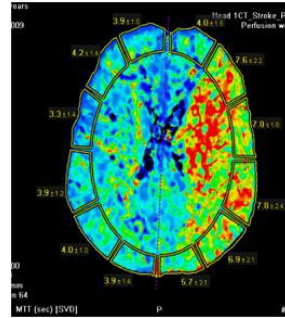


STROKE: V 2.5 SOFT + 4.3F DAC™ = TIMI III REVASCULARIZATION AFTER 1 PASS

COURTESY OF SATOSHI TATESHIMA, MD, AND PAUL SAPHIER, MD, UCLA MEDICAL CENTER, LOS ANGELES, CA

PATIENT PRESENTATION

- 50-year-old male with a mechanical heart valve. Subtherapeutic on Coumadin®. Presented with left MCA Syndrome, NIHSS = 12.
- Full dose of IV tPA administered at a community hospital then patient transferred to UCLA.
- Diagnostic Workup
 - CTA – Left M1 Occlusion
 - CTP – mismatch



PROCEDURAL CHALLENGES AND DAC SOLUTIONS

PROCEDURAL CHALLENGES	DAC™ SOLUTIONS
Proximal ICA 90 degree bend limiting distal placement of balloon guide catheter	Distal placement of the 4.3F DAC provided support without the need for advancing the Balloon Guide Catheter past the ICA bend.
	Additional support from the 4.3F DAC facilitated Merci clot retrieval by aligning the force applied to the clot with the vessel.

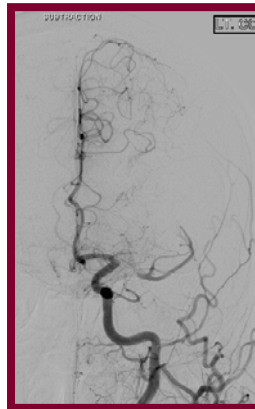
INTERVENTION

- 8F 10 cm femoral sheath
- 125 cm 5F Cook Medical VTK catheter with 0.035 Traxcess™ Guidewire
- Advanced coaxially within 8F Merci® Balloon Guide Catheter into left ICA
- Merci® MC18L and 0.014 Microvention microguide wire advanced coaxially within the 4.3F DAC x 130cm
- 1 pass with Merci® V 2.5 Soft Retriever

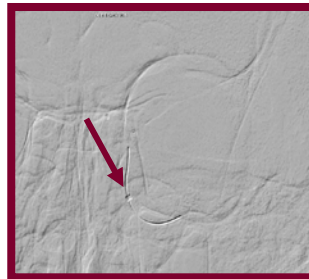
PROCEDURAL AND CLINICAL OUTCOME

- **TIMI III flow throughout the entire hemisphere**
- Sizable clot noted on the retriever and in the aspirate
- **NIHSS=2 one hour after procedure**
- Cardiac catheterization performed for underlying cardiac issues
- **Discharged home NIHSS=0 after 5 days**

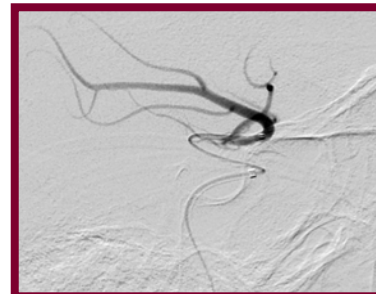
Diagnostic Angiograms Left M1 occlusion



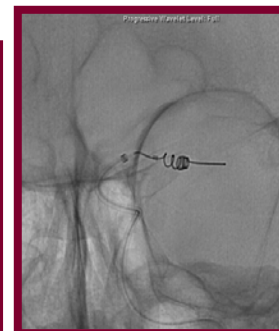
Telescoping of 4.3F DAC over MC 18L and wire



4.3F DAC in ICA siphon; 18L in MCA



4.3F DAC positioned close to Merci Retriever®



Final Angiogram



"[4.3F DAC] helped the Merci V2.5 Retriever to be perfectly aligned to the natural axis of the clot in the M1 segment. Such a perfect alignment of clot retriever maximizes the chance of recanalization in each pull."

Dr. Satoshi Tateshima, UCLA Medical Center